

# LabCAS Training

Uploading LTP2 Images  
10/24/2023

# Training outline

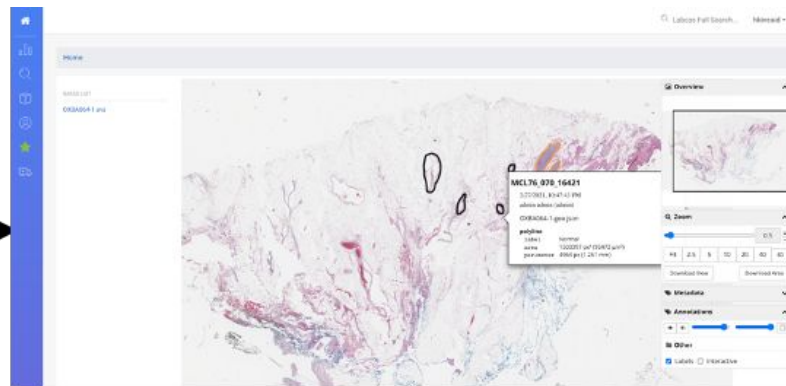
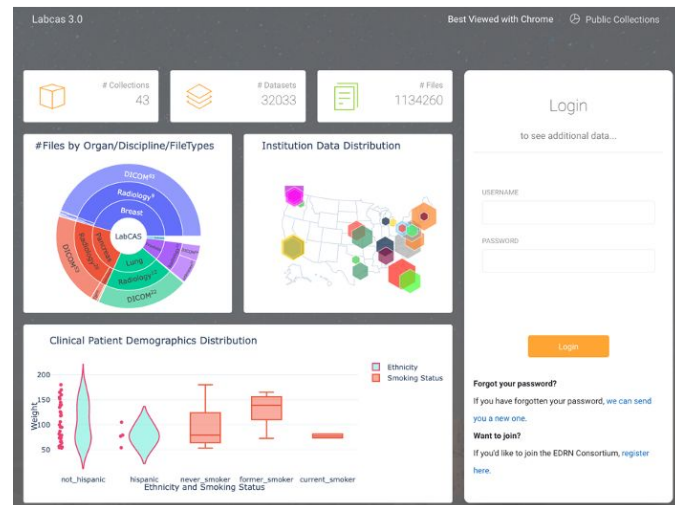
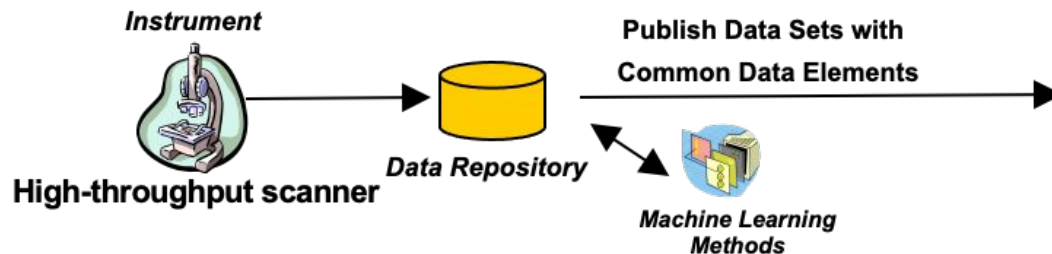
- LabCAS Overview
- Preparing your data for uploads
- Upload data using Aspera
- Review your data in LabCAS after upload and publishing

# EDRN Cancer Biomarker Data Commons (LabCAS)

A secure, reliable means to capture, process, manage, search, share and enable analysis of scientific data publicly and within EDRN

36 Collections, data generated from research protocols, captured from over 1600 biomarkers

- Support data delivery from sites
- Share data/images
- Link to other data repositories
- Plug in AI/ML methods
- Integrate visualization and other analytical tools



# Posted on the EDRN Portal

→ <https://edrn.nci.nih.gov/>

EDRN / Data and Resources / Informatics / LabCAS Cancer Biomarker Data Commons

## LabCAS Cancer Biomarker Data Commons



About LabCAS



EDRN Cancer Biomarker Data Commons (LabCAS) Data (login not required for public data)



Prepare and Organize Data



Upload data



Download data



EDRN Data Model (login required)



Sharing Data



Citing data and Digital Object Identifiers (DOIs)

# Preparing your data prior to transferring

*Follow the instructions in the Imaging and Data Transfer to JPL SOP from the DMCC (Version 7.2)*

- Event IDs generated via VSIMS at → <https://www.compass.fhcrc.org/vsims/>
- De-identify the DICOM images using the Event IDs to label the CT/PET images
- Organize the DICOM files in directories labeled with the Event IDs

For example:

```
1234567/  
    1231000 .dcm  
    1231001 .dcm  
    1231002 .dcm
```

# Setup IBM Aspera Connect

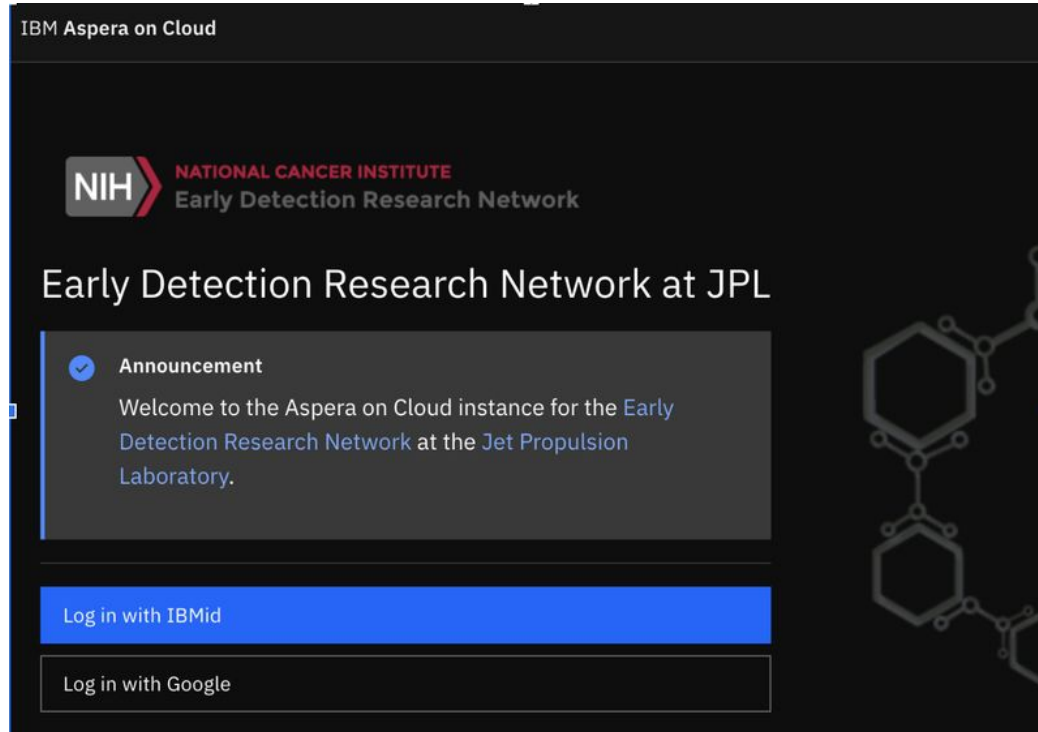
IBM Aspera Connect enables fast, secure, and reliable data transfers, regardless of file size or transfer distance

Simple setup with a few emails



1. Send an email to the JPL Informatics Center at [ic-data@jpl.nasa.gov](mailto:ic-data@jpl.nasa.gov). Include the following:
  - Your name and Institution
  - The project name for which you will be uploading data, such as the “EDRN Lung Team Project 2”
  - Your Google Gmail address (If you don't have a Gmail account, we will walk you through the process of setting up an IBMid for Aspera account.)
2. JPL Team will Invite you: After receiving your email, we will send you an invitation to join the Aspera on Cloud instance designated for EDRN.
3. Accept the Invitation: Look out for the email invitation in your inbox (from IBM Aspera on Cloud), and click the "Accept" button within the message. This action will direct you to the EDRN Aspera login page.

Login to EDRN Aspera by visiting →  
<https://edrn-labcas.ibmaspera.com/>:



IBM Aspera on Cloud

**NIH** NATIONAL CANCER INSTITUTE  
Early Detection Research Network

## Early Detection Research Network at JPL

**Announcement**

Welcome to the Aspera on Cloud instance for the [Early Detection Research Network](#) at the [Jet Propulsion Laboratory](#).

Log in with IBMid

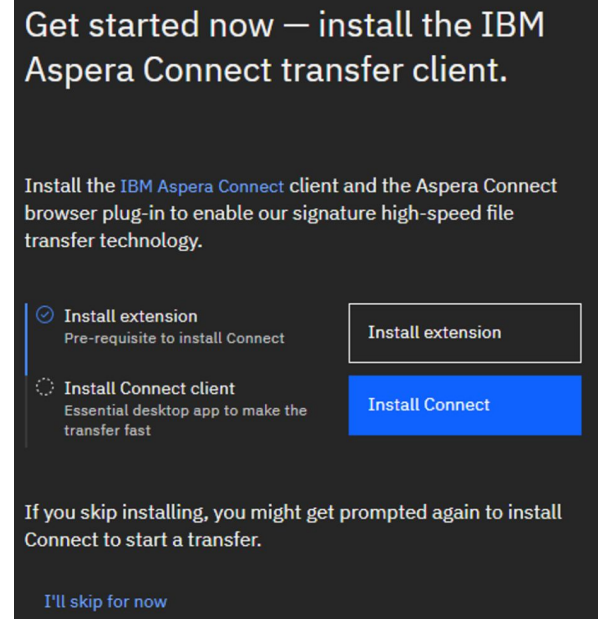
Log in with Google

The screenshot shows a dark-themed login interface. At the top left, it says 'IBM Aspera on Cloud'. Below that is the NIH logo and 'NATIONAL CANCER INSTITUTE Early Detection Research Network'. The main heading is 'Early Detection Research Network at JPL'. There is a notification box with a blue checkmark icon and the text 'Announcement' followed by a welcome message. At the bottom, there are two buttons: 'Log in with IBMid' (highlighted in blue) and 'Log in with Google'.

Sign in using your Gmail credentials or your IBMid.

# Aspera Connect: the browser extension and helper app

- When logging into <https://edrn-labcas.ibmaspera.com/> for the first time, you'll be prompted to download a browser extension, a helper app, or both
- Results will differ if you're on Windows, macOS, etc., and depending on your web browser
- We recommend Google Chrome for compatibility with LabCAS



Get started now — install the IBM Aspera Connect transfer client.

Install the IBM Aspera Connect client and the Aspera Connect browser plug-in to enable our signature high-speed file transfer technology.

- Install extension  
Pre-requisite to install Connect
- Install Connect client  
Essential desktop app to make the transfer fast

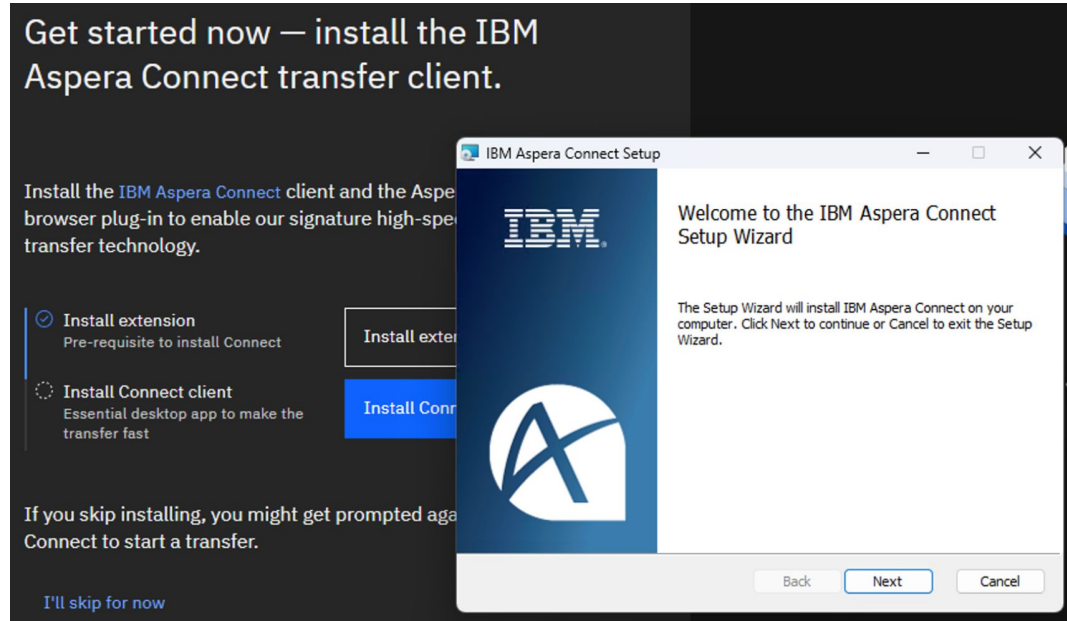
If you skip installing, you might get prompted again to install Connect to start a transfer.

I'll skip for now

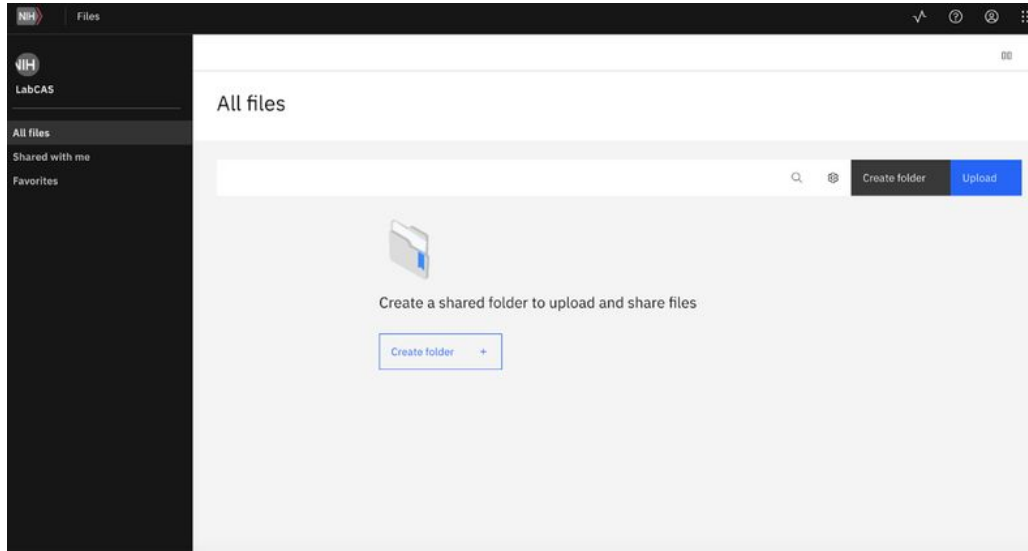


# Helper App and Browser Extension

- If you click “I’ll skip for now”, you’ll be prompted later to do it
- You may have to restart your browser or reboot your computer when installation is done
- Follow the prompts
- Screenshots may vary



# Upload Your Data



Navigate to the files on your computer and drag and drop

**OR**

Click the 🔍 or the blue Upload button to find the files and click Upload

Note: On Windows, it may be necessary to initially use 🔍 or the blue Upload button to upload files; subsequent can be dragged-and-dropped into the browser window

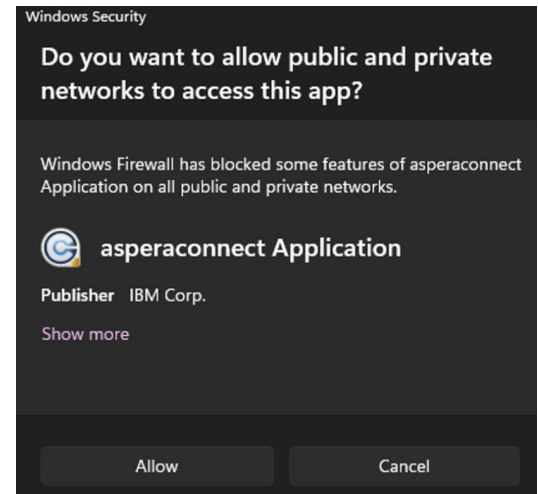
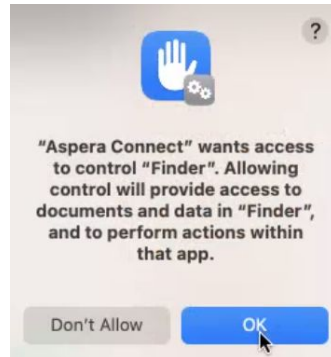
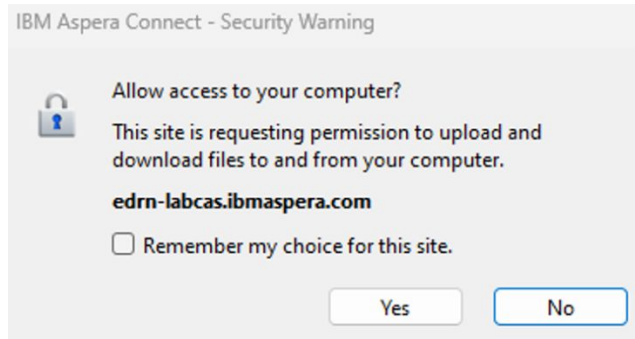
# Tips and Tricks

1. Ignore the Create folder button
2. Use the Aspera Connect helper app



to monitor the file transfer. If you have any issues, try the retry button or contact the JPL Informatics Center at [ic-data@jpl.nasa.gov](mailto:ic-data@jpl.nasa.gov)

3. If you see any of these, please allow them access



# Demo of Aspera

# Notify and Review

Data upload complete:

- Notify the JPL Informatics Center that your data transfer is complete by emailing [ic-data@jpl.nasa.gov](mailto:ic-data@jpl.nasa.gov)
  - Include your VSIMS username so we can provide you with permissions to view your sites images in LabCAS.
- JPL team will review and ingest your data to the EDRN Cancer Biomarkers Data Commons (LabCAS).

